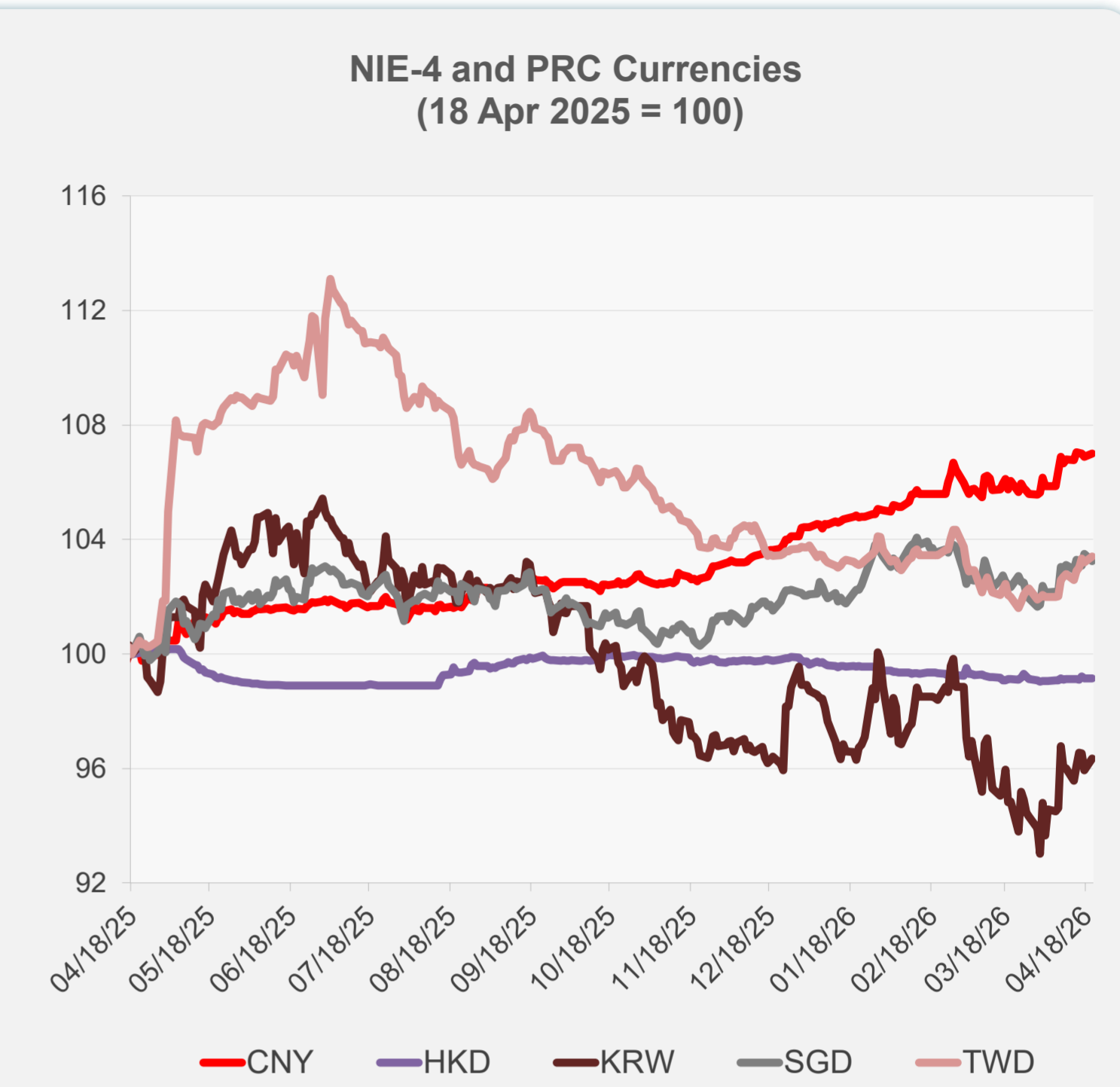
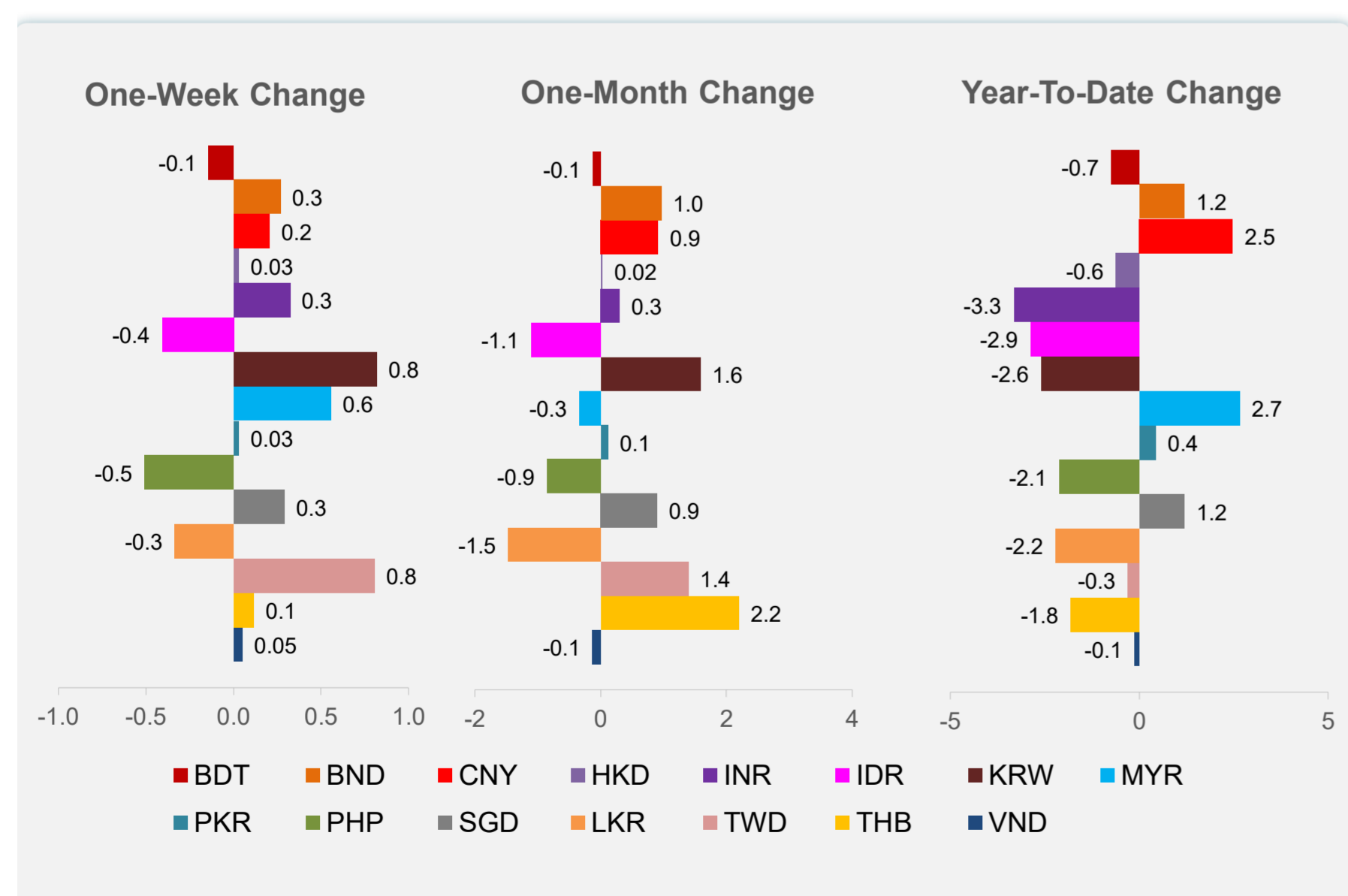
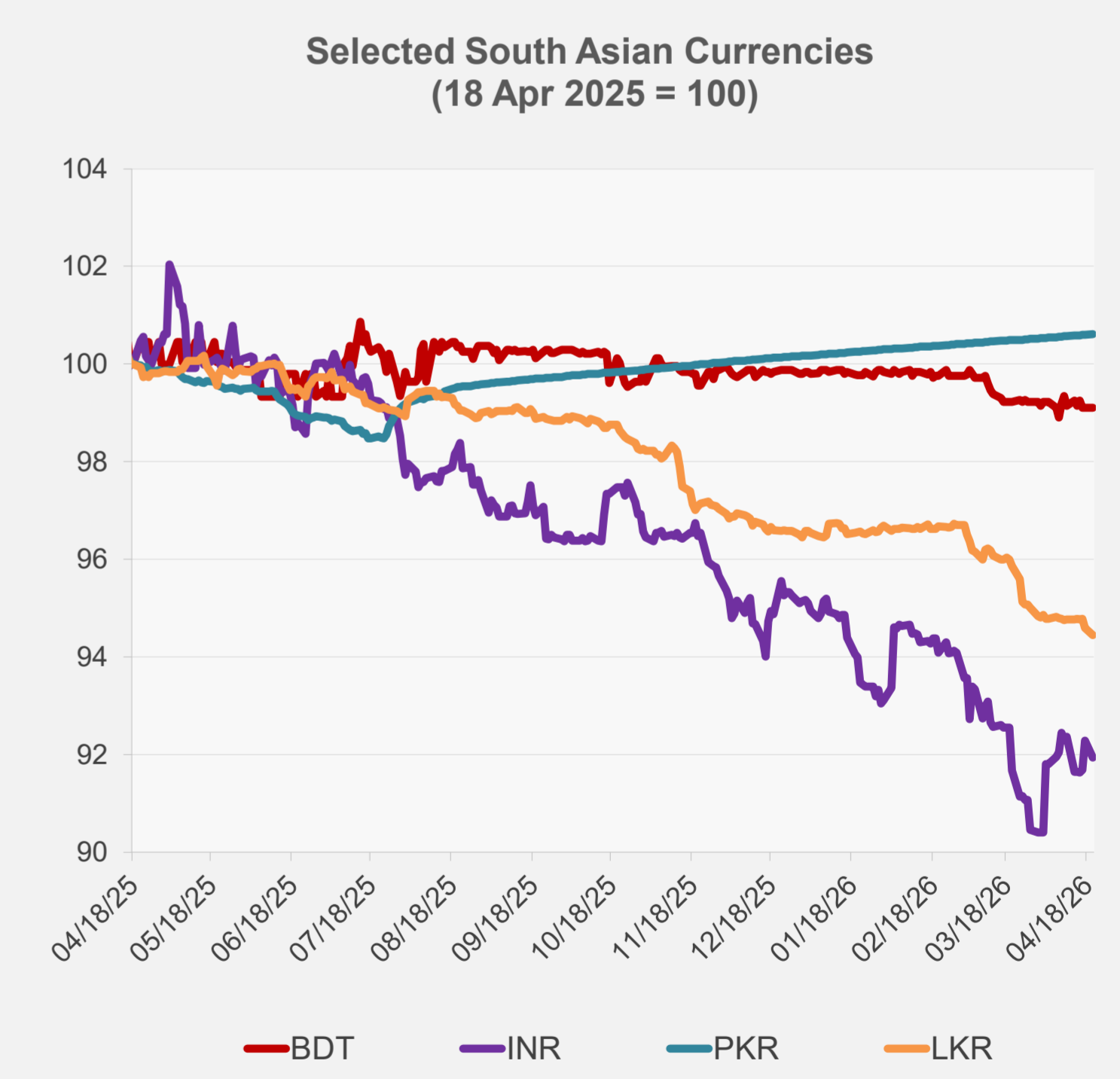
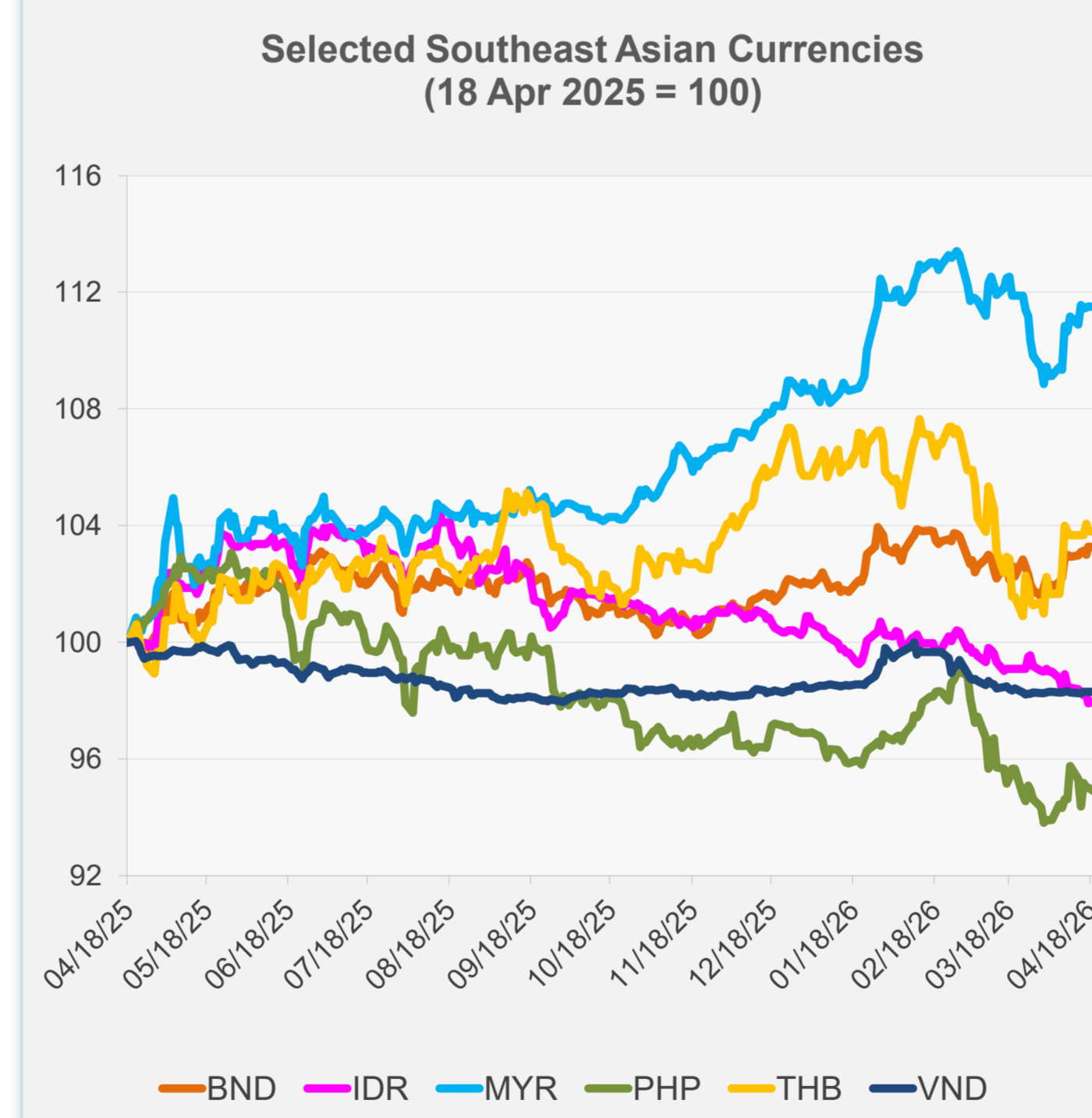


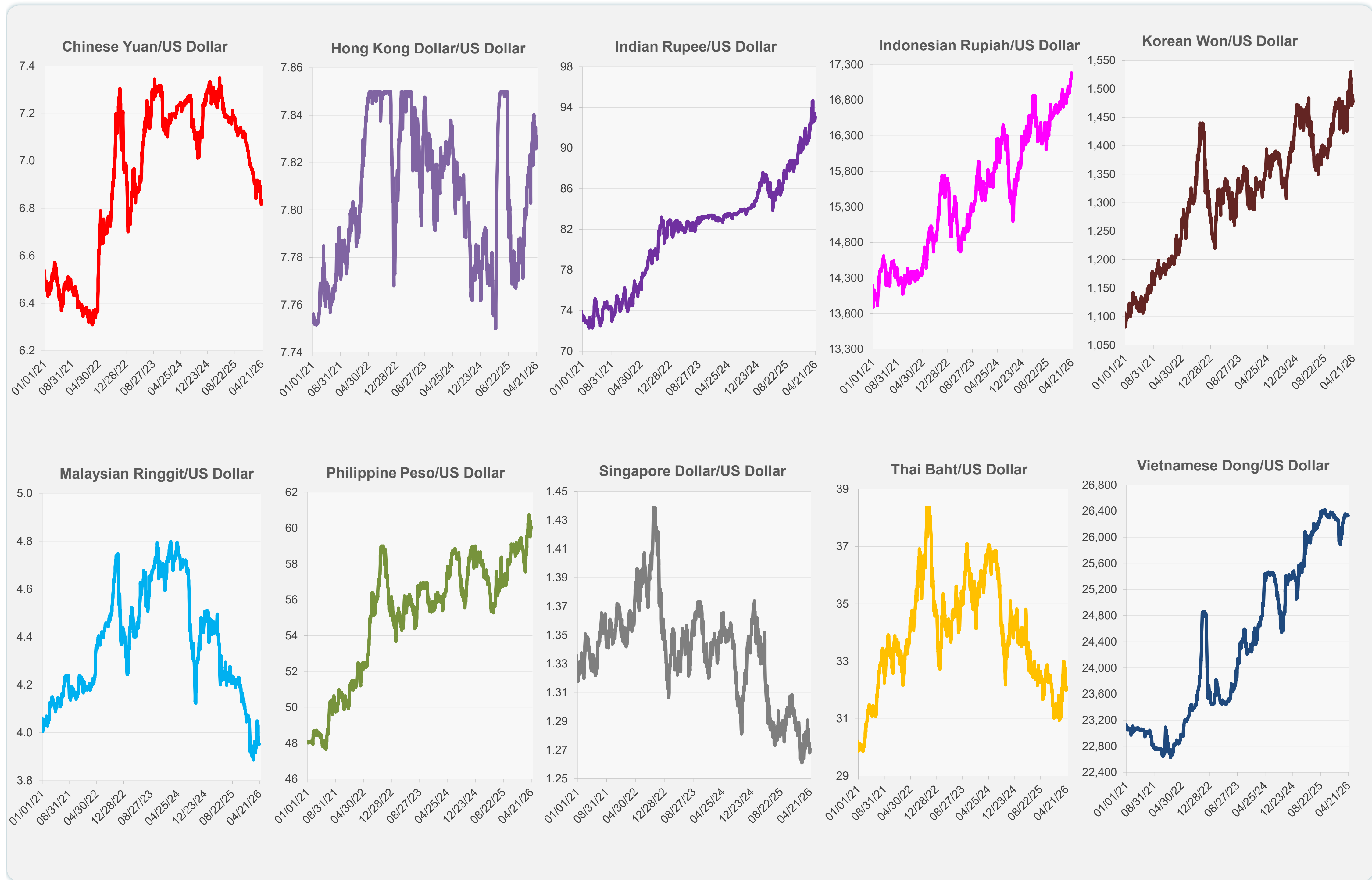
	Latest Closing	% change from Previous Day	% change from 01-Jan-26
Euro	0.85	-0.36	0.23
Japanese yen (JPY)	158.97	0.19	-1.88
Bangladeshi taka (BDT)	123.15	0.00	-0.73
Brunei dollar (BND)	1.27	-0.04	1.19
Chinese yuan (CNY)	6.82	0.10	2.47
Hong Kong dollar (HKD)	7.83	-0.01	-0.61
Indian rupee (INR)	93.07	-0.37	-3.32
Indonesian rupiah (IDR)	17,170.00	0.09	-2.88
Korean won (KRW)	1,477.20	0.43	-2.59
Malaysian ringgit (MYR)	3.95	-0.01	2.66
Pakistan rupee (PKR)	278.89	0.01	0.43
Philippine peso (PHP)	60.08	-0.18	-2.11
Singapore dollar (SGD)	1.27	-0.22	1.19
Sri Lanka rupee (LKR)	316.61	-0.16	-2.21
Taipei,China NT dollar (TWD)	31.53	0.21	-0.29
Thai baht (THB)	32.09	-0.01	-1.81
Vietnamese dong (VND)	26,331.50	0.01	-0.12



NIE = Newly Industrialized Economies



Note: Negative/Decreasing values indicate depreciation of local currency, and positive/increasing values indicate appreciation.
Source: ADB calculations using data from Bloomberg and Haver Analytics.

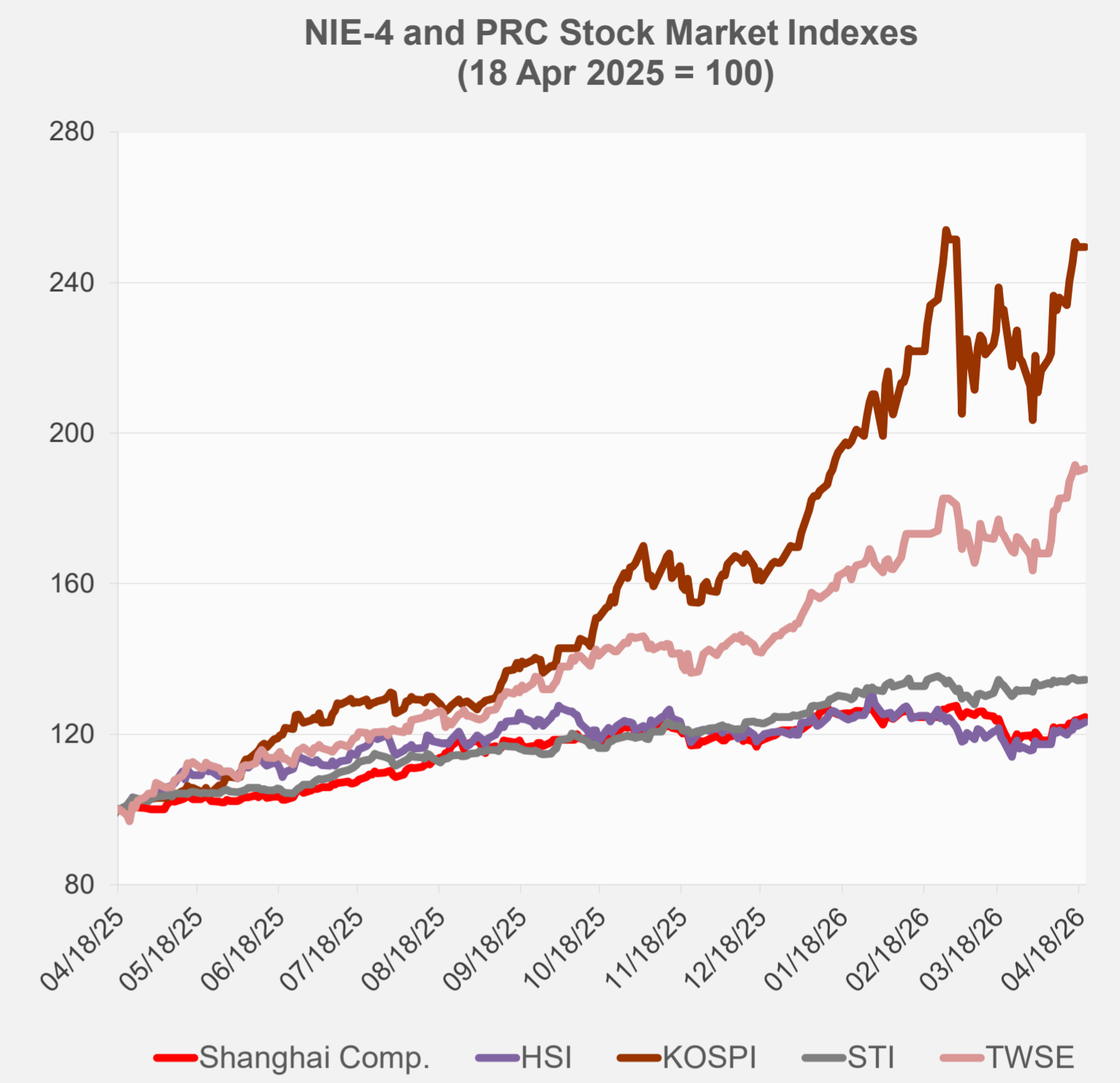


Source: Haver Analytics.

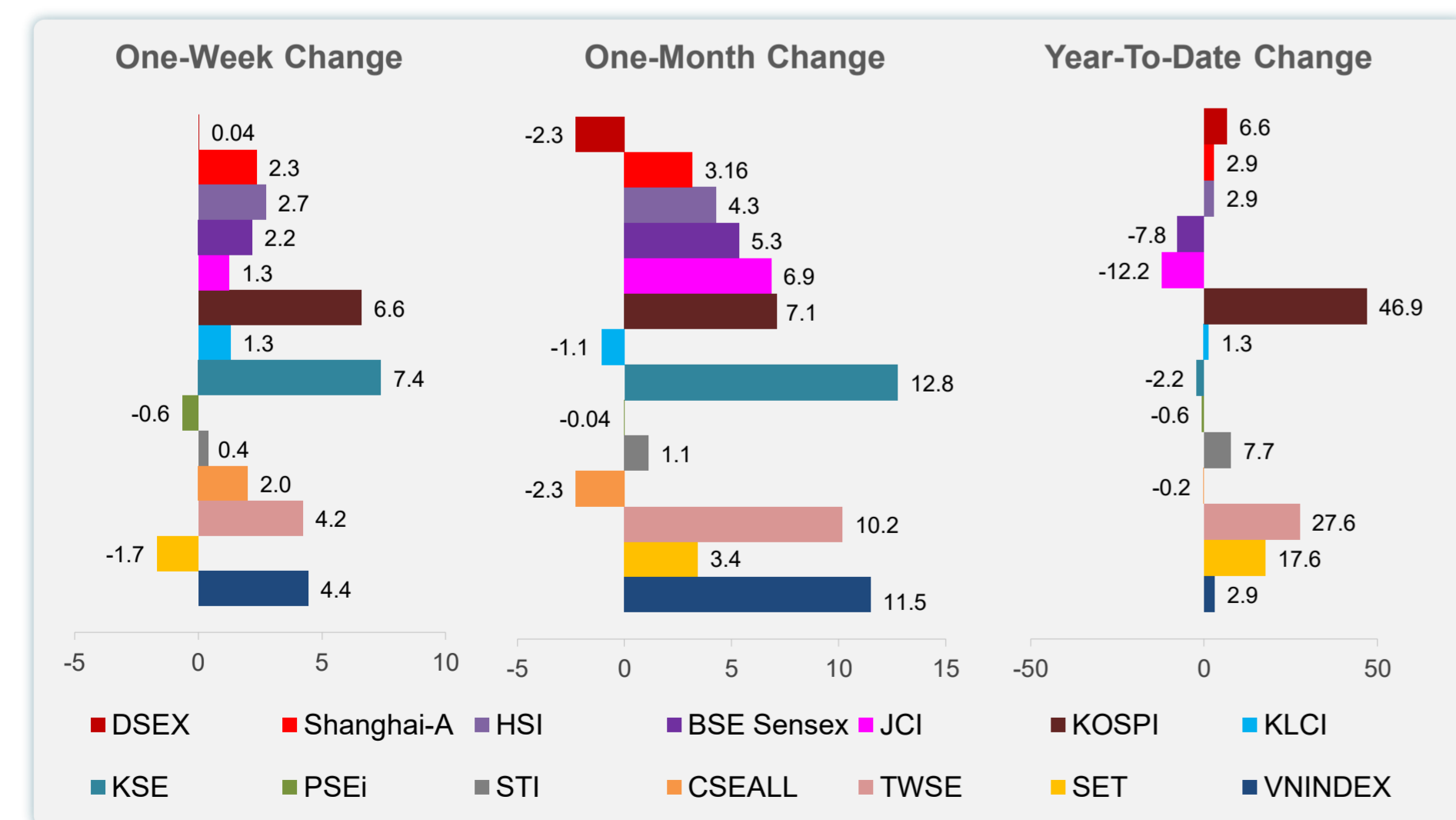
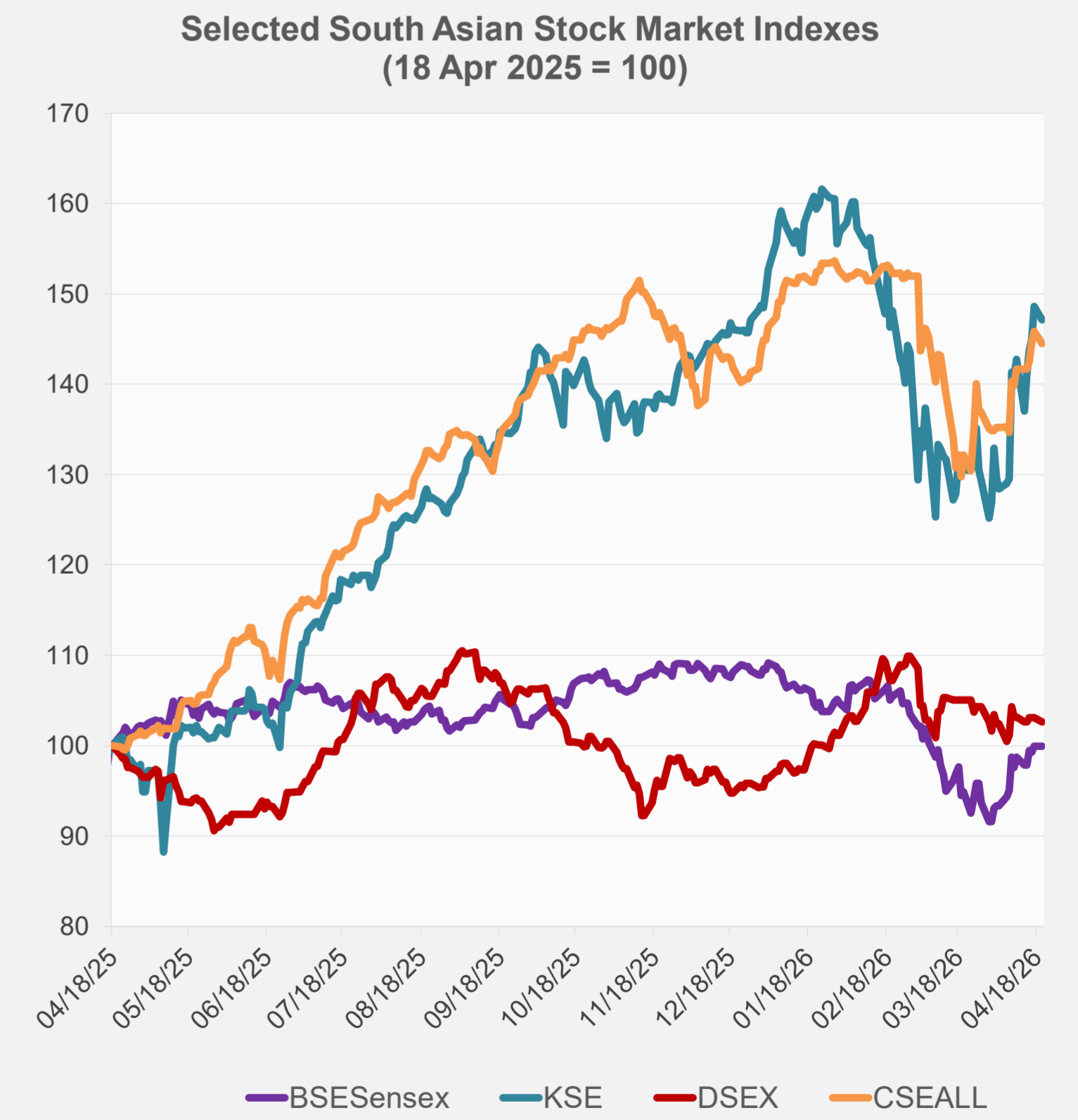
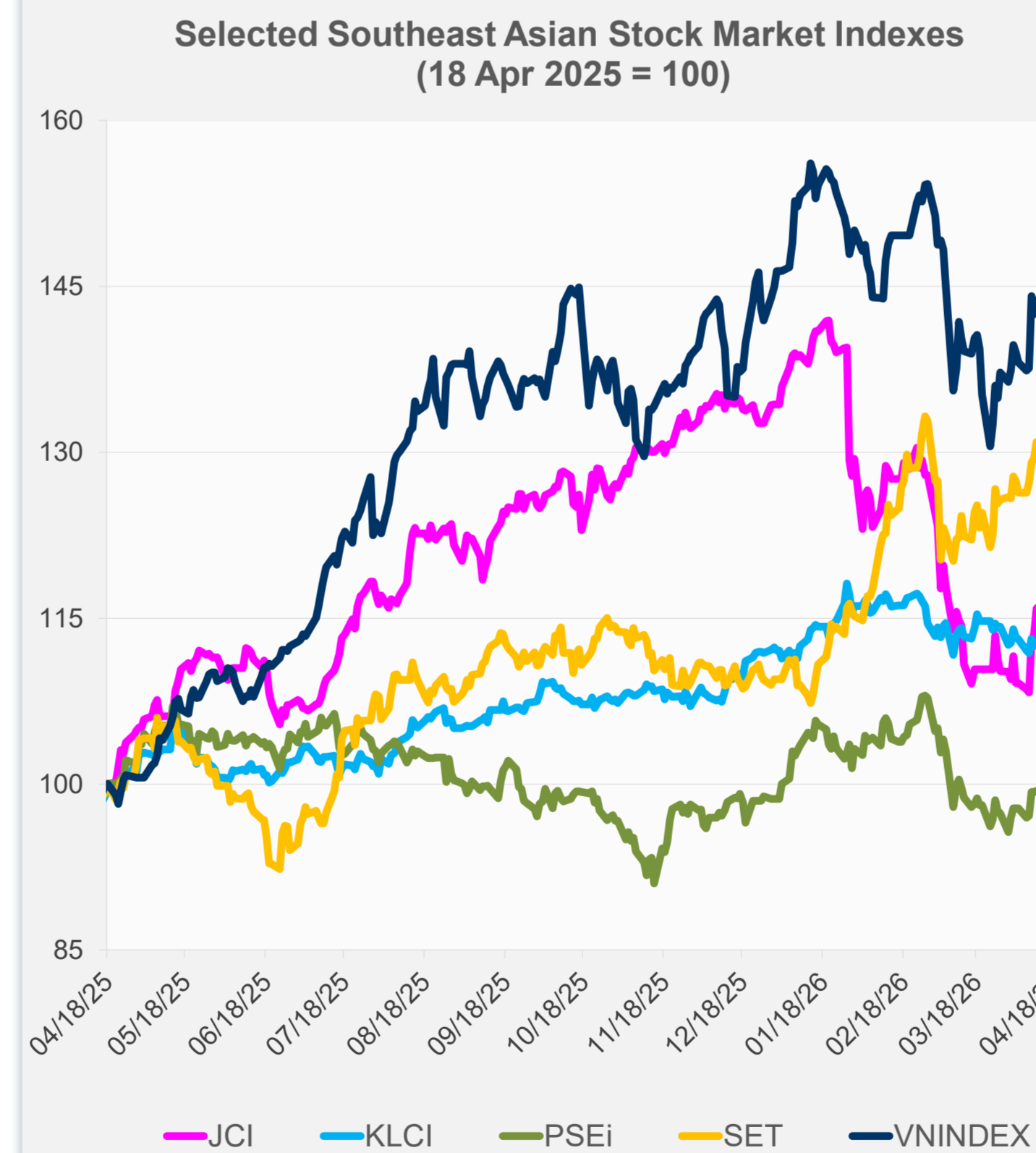
Daily Market Watch STOCK INDEXES

21 April 2026, 9:00 AM Manila

	Latest Closing	% change from Previous Day	% change from 01-Jan-26
US Dow Jones Ind Avg	49,442.56	-0.01	2.87
US NASDAQ	24,404.39	-0.26	5.00
US S&P 500	7,109.14	-0.24	3.85
UK FTSE 100	14,484.91	-0.71	28.62
EURO STOXX 50	5,982.63	-1.24	3.30
Japan NIKKEI 225	58,824.89	0.60	16.86
Bangladesh DSEX	5,232.49	-0.46	6.55
PRC Shanghai Comp.	4,082.13	0.76	2.85
Hong Kong, China HSI	26,361.07	0.77	2.85
India BSE Sensex	78,520.30	0.03	-7.83
Indonesia JCI	7,594.11	-0.52	-12.18
Korea, Rep. of KOSPI	6,191.92	0.00	46.93
Malaysia KLCI	1,702.30	0.42	1.32
Pakistan KSE 100	172,606.00	-1.02	-2.19
Philippines PSEi	6,016.03	0.28	-0.61
Singapore STI	5,004.07	0.12	7.70
Sri Lanka CSEALL	22,570.03	-0.89	-0.24
Taipei, China TWSE	36,958.80	0.42	27.60
Thailand SET	1,481.85	-0.04	17.64
Viet Nam VNINDEX	1,837.11	1.10	2.95



NIE = Newly Industrialized Economies



Sources: ADB calculations using data from Bloomberg and CEIC Data Company.

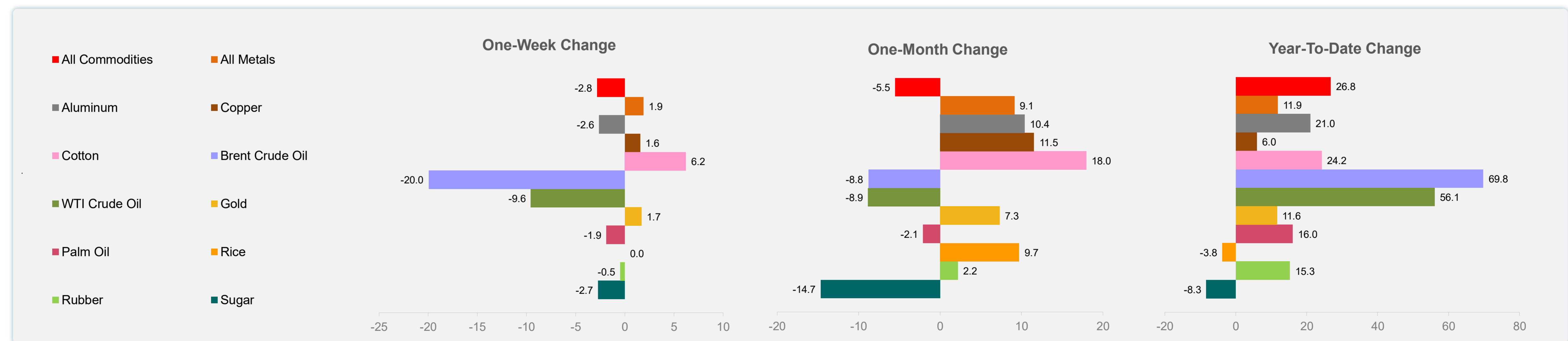
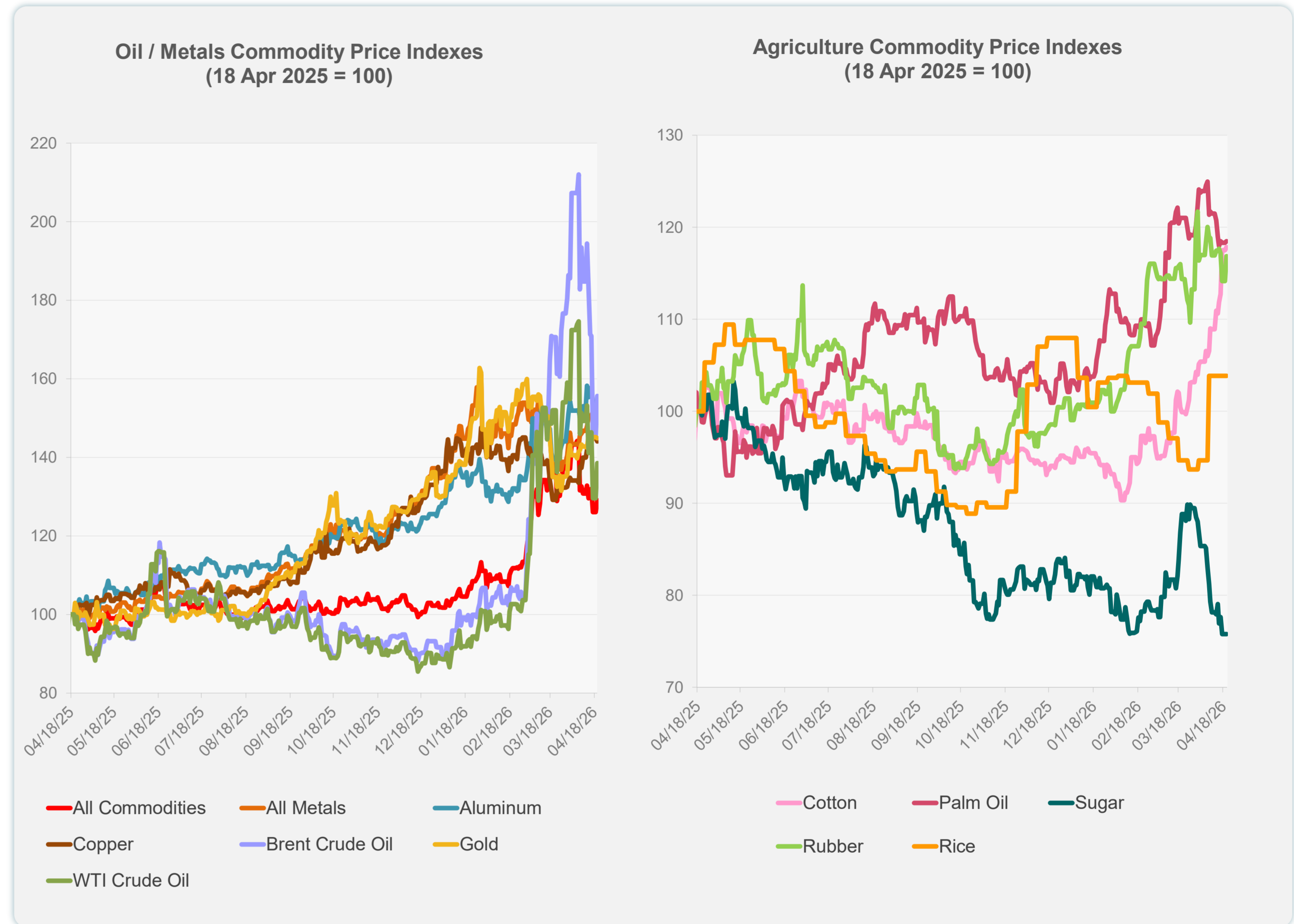


Sources: ADB calculations using data from Bloomberg and CEIC Data Company.

Daily Market Watch
COMMODITY PRICES

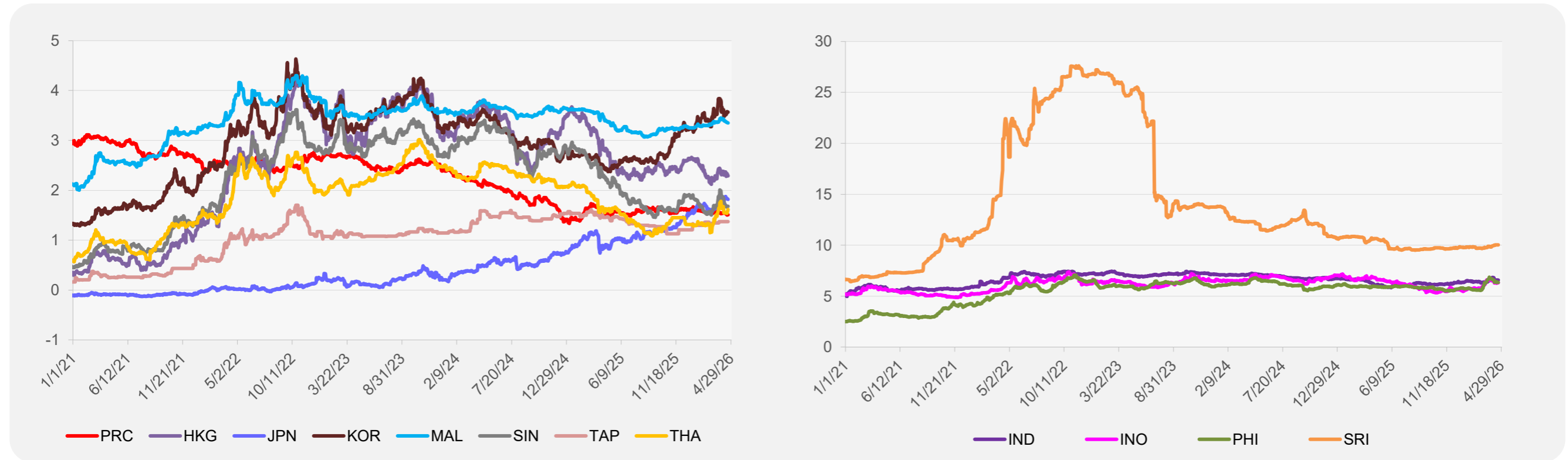
	Unit	Latest Closing	% change from Previous Day	% change from 01-Jan-26
S&P All Commodities	US\$	695.34	2.39	26.77
S&P All Metals	US\$	496.35	-0.73	11.85
Aluminum	US\$/metric ton	3,590.76	0.02	20.98
Copper	US\$/metric ton	13,199.54	-0.62	5.99
Cotton	US cents/lb	77.04	0.29	24.22
Brent Crude Oil	US\$/barrel	106.02	7.15	69.78
WTI Crude Oil	US\$/barrel	89.61	6.87	56.06
Gold	US\$/troy oz	4,820.66	-0.20	11.61
Palm Oil	US\$/metric tonne	1,123.99	0.14	16.04
Rice ¹	US\$/metric ton	429.00	0.00	-3.81
Rubber ²	US\$/kg	247.80	2.40	15.26
Sugar	US cents/lb	13.56	0.00	-8.32

¹ Latest closing price from 8 April 2026.
² Singapore Exchange, Ribbed Smoked Sheet Rubber.

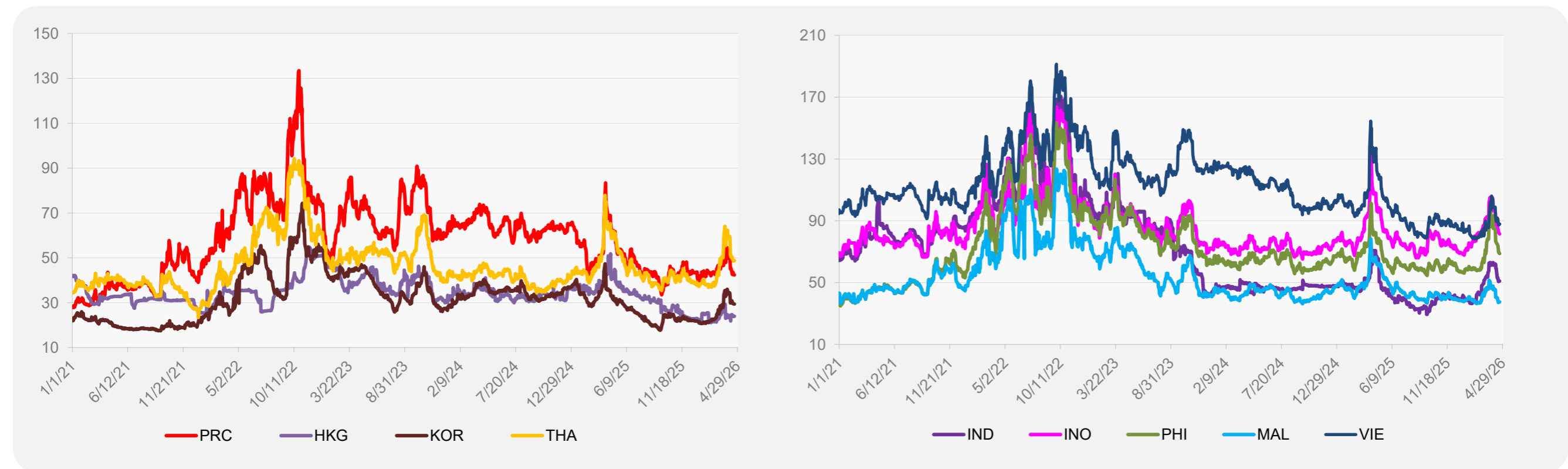


Source: ADB calculations using data from Bloomberg.

5-YEAR LOCAL CURRENCY GOVERNMENT BOND YIELDS (%)



5-YEAR CREDIT DEFAULT SWAP¹



¹ In USD and based on sovereign bonds.
Source: ADB calculations using data from Bloomberg.